

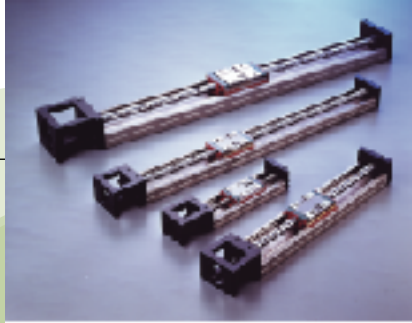
HIWIN®

Linear Stage

NEW Patent Pending
KK TYPE

The Linear Stage KK is a slider actuated by a motor-driven ballscrew and guided by a linear guideway with a U-shape rail. The slider acts as the ballscrew's nut and the guideway's block.





Linear Stage

KK Type

Features

- ◆ Easy for system design, installation and maintenance
- ◆ Compact and light weight
- ◆ High accuracy
- ◆ High stiffness
- ◆ Well equipped with required accessories.
- ◆ Design Optimization: The structure is designed for high stiffness and light weigh. The FEM analysis is shown beside.

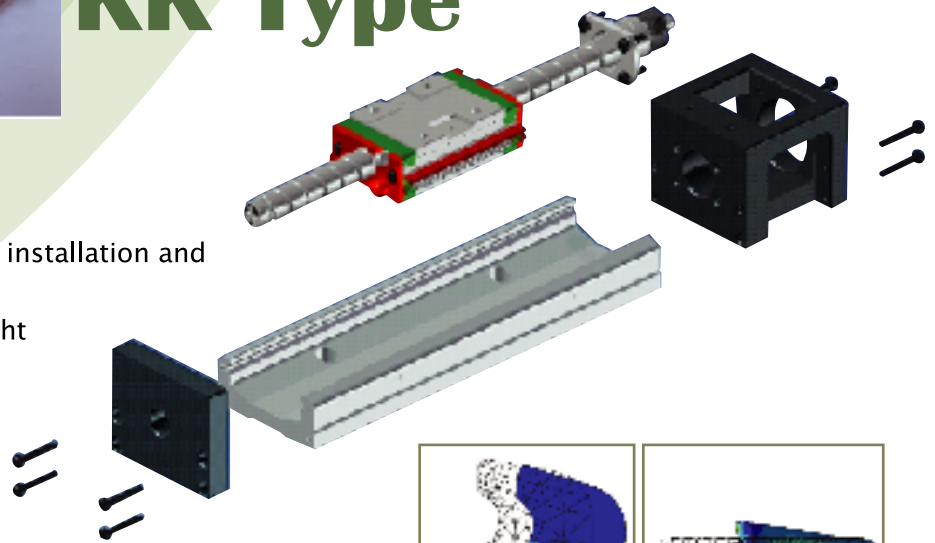


Figure 1

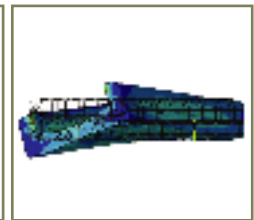


Figure 2

Description of Serial Number

KK	60	10	P	E	-	400	E	A	2	E	-	F0
KK Model	Nominal Width: 40, 50, 60, 86, 100	Ballscrew (B/S) Lead: KK40 : 01 KK50 : 02 KK60 : 05, 10 KK86 : 10, 20 KK100 : 20	Accuracy Grade: P-Precision C-Normal	E: Special B/S Type None : Standard B/S Type		Rail Standard Length (mm) KK40: 100, 150, 200 KK50: 150, 200, 250, 300 KK60: 150, 200, 300, 400, 500, 600 KK86 : 340, 440, 540, 640, 740, 940 KK100 : 980, 1080, 1180, 1280, 1380	E: Special Rail Type None: Standard Rail Type	Slider Type: A-Normal S-Short		Number of Slider: 1 or 2		ref. Motor Adaptor Flange E: Special Slider Type None: Standard Slider Type

Example: **KK6010P-400A1-F0**

*Accessories for below, cover and sensor, Please contact with.

Max. Speed Limit

Model	Ballscrew Lead (mm)	Rail Length (mm)	Speed (mm/sec)	
			Precision	Normal
KK40	01	100	190	-
		150	190	-
		200	190	-
KK50	02	150	270	-
		200	270	-
		250	270	-
		300	270	-
KK60	05	150	550	390
		200	550	390
		300	550	390
		400	550	390
		500	550	390
	10	600	340	340
		150	1100	790
		200	1100	790
		300	1100	790
		400	1100	790
KK86	10	500	1100	790
		600	670	670
		340	740	520
		440	740	520
		540	740	520
	20	640	740	520
		740	740	520
		940	-	430
		340	1480	1050
		440	1480	1050
KK100	20	540	1480	1050
		640	1480	1050
		740	1480	1050
		940	-	870
		980	1120	800
KK100	20	1080	980	800
		1180	750	750
		1280	-	630
		1380	-	530

Specifications

		KK4001	KK5002	KK6005		KK6010		KK8610		KK8620		KK10020	
		Precision	Precision	Precision	Normal	Precision	Normal	Precision	Normal	Precision	Normal	Precision	Normal
Ballscrews	Nominal Diameter (mm)	8	8	12				15		15		20	
	Lead (mm)	1	2	5		10		10		20		20	
	Basic Dynamic Load Rating (N)	735	2136	3744	3377	2410	2107	7144	6429	4645	4175	7046	4782
	Basic Static Load Rating (N)	1538	3489	6243	5625	3743	3234	12642	11387	7655	6889	12544	9163
Linear Guideway	Basic Dynamic Load Rating (N)	Block A	3920	8007	13230				31458				39200
		Block S	-	-	7173				-				-
	Basic Static Load Rating (N)	Block A	6468	12916	21462				50764				63406
		Block S	-	-	11574				-				-
	Allowable Static Moment M_x (pitching)(N-m)	Block A1	33	116	152				622				960
		Block A2	182	278	348				3050				4763
		Block S1	-	-	72				-				-
		Block S2	-	-	205				-				-
	Allowable Static Moment M_y (yawing)(N-m)	Block A1	33	116	152				622				960
		Block A2	182	278	348				3050				4763
		Block S1	-	-	72				-				-
		Block S2	-	-	205				-				-
Allowable Static Moment M_o (rolling)(N-m)	Block A1	81	222	419				1507				2205	
	Block A2	162	444	838				3014				4410	
	Block S1	-	-	241				-				-	
	Block S2	-	-	482				-				-	

Accuracy Grade

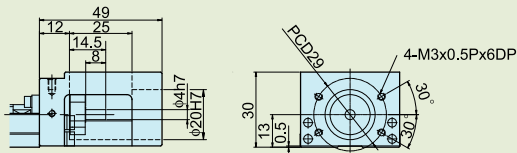
unit: mm

Model	Rail Length	Repeatability		Accuracy		Running Parallelism		Starting Torque (N-cm)	
		Precision	Normal	Precision	Normal	Precision	Normal	Precision	Normal
KK40	100	±0.003	-	0.020	-	0.010	-	1.2	-
	150	±0.003	-	0.020	-	0.010	-	1.2	-
	200	±0.003	-	0.020	-	0.010	-	1.2	-
KK50	150	±0.003	-	0.020	-	0.010	-	4	-
	200	±0.003	-	0.020	-	0.010	-	4	-
	250	±0.003	-	0.020	-	0.010	-	4	-
KK60	300	±0.003	-	0.020	-	0.010	-	4	-
	150	±0.003	±0.01	0.020	-	0.010	-	15	7
	200	±0.003	±0.01	0.020	-	0.010	-	15	7
	300	±0.003	±0.01	0.020	-	0.010	-	15	7
	400	±0.003	±0.01	0.020	-	0.010	-	15	7
	500	±0.003	±0.01	0.025	-	0.015	-	15	7
KK86	600	±0.003	±0.01	0.025	-	0.015	-	15	7
	340	±0.003	±0.01	0.025	-	0.015	-	15	10
	440	±0.003	±0.01	0.025	-	0.015	-	15	10
	540	±0.003	±0.01	0.025	-	0.015	-	15	10
	640	±0.003	±0.01	0.025	-	0.015	-	15	10
	740	±0.003	±0.01	0.030	-	0.020	-	17	10
KK100	940	-	±0.01	-	-	-	-	-	10
	980	±0.005	±0.01	0.035	-	0.025	-	17	12
	1080	±0.005	±0.01	0.035	-	0.025	-	17	12
	1180	±0.005	±0.01	0.040	-	0.030	-	20	12
	1280	-	±0.01	-	-	-	-	-	15
1380	-	±0.01	-	-	-	-	-	15	

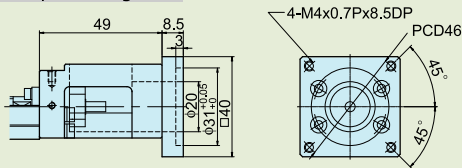
Motor Adaptor Flange

KK40 Motor Adaptor Flange of KK40:

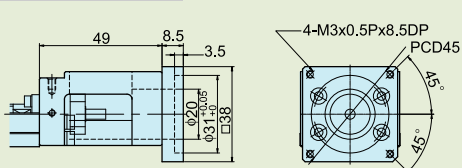
Motor Adaptor Flange F0



Motor Adaptor Flange F1

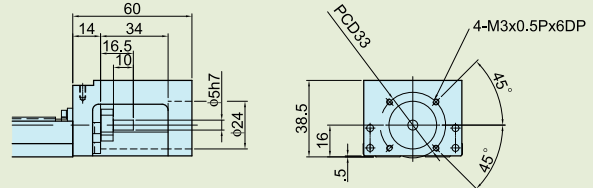


Motor Adaptor Flange F2

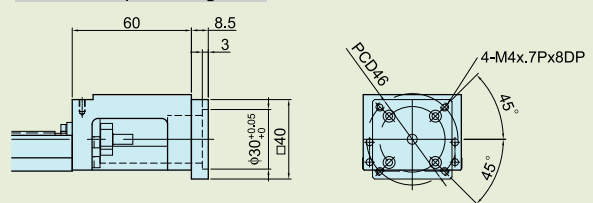


KK50 Motor Adaptor Flange of KK50:

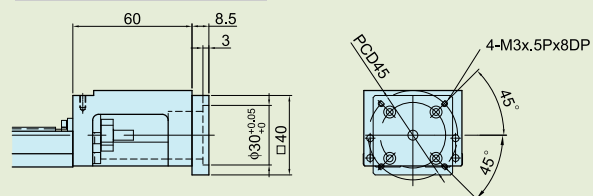
Motor Adaptor Flange F0



Motor Adaptor Flange F1

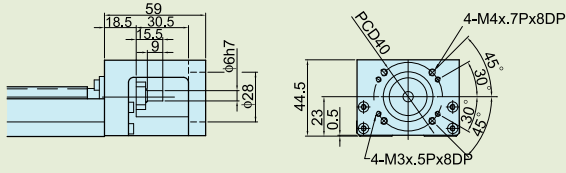


Motor Adaptor Flange F2

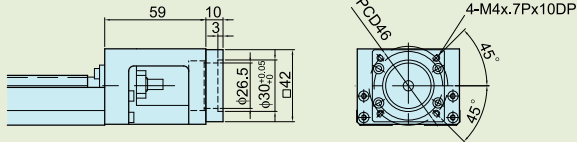


KK60 Motor Adaptor Flange of KK60:

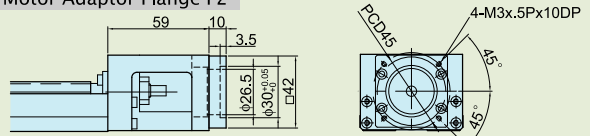
Motor Adaptor Flange F0



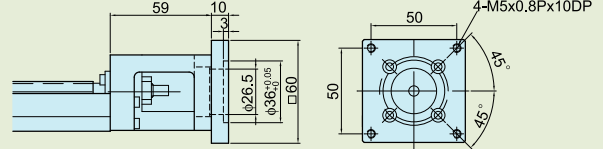
Motor Adaptor Flange F1



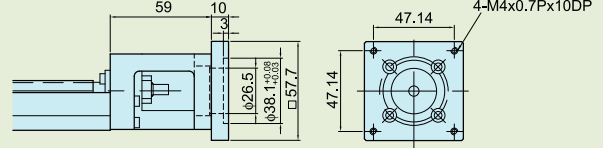
Motor Adaptor Flange F2



Motor Adaptor Flange F3

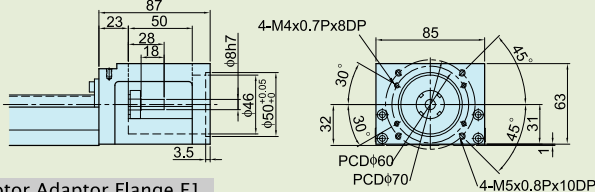


Motor Adaptor Flange F4

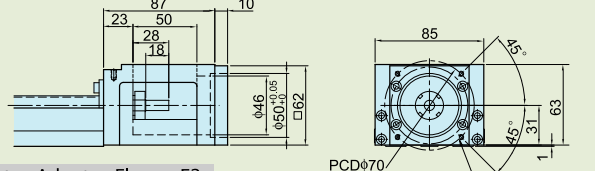


KK86 Motor Adaptor Flange of KK86:

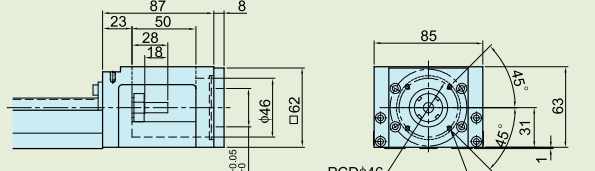
Motor Adaptor Flange F0



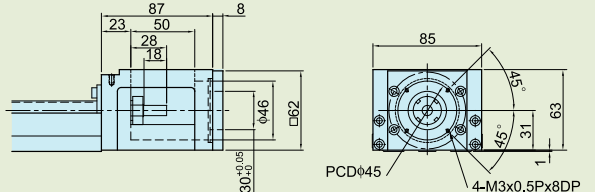
Motor Adaptor Flange F1



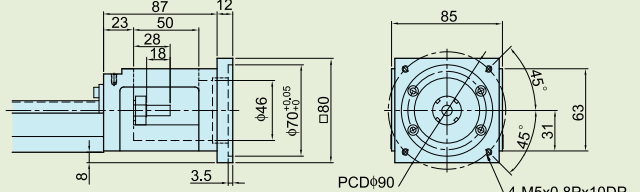
Motor Adaptor Flange F2



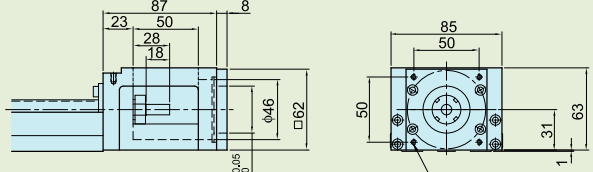
Motor Adaptor Flange F3



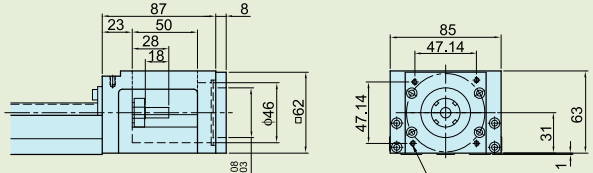
Motor Adaptor Flange F4



Motor Adaptor Flange F5

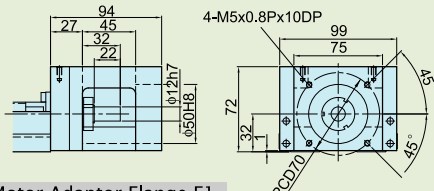


Motor Adaptor Flange F6

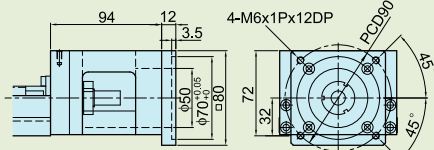


KK100 Motor Adaptor Flange of KK100:

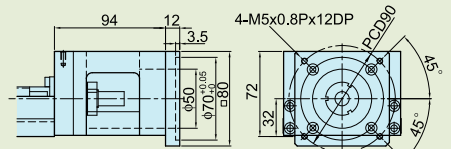
Motor Adaptor Flange F0



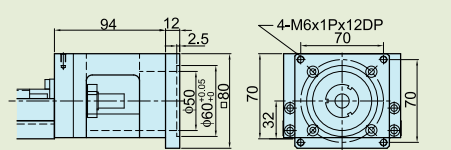
Motor Adaptor Flange F1



Motor Adaptor Flange F2

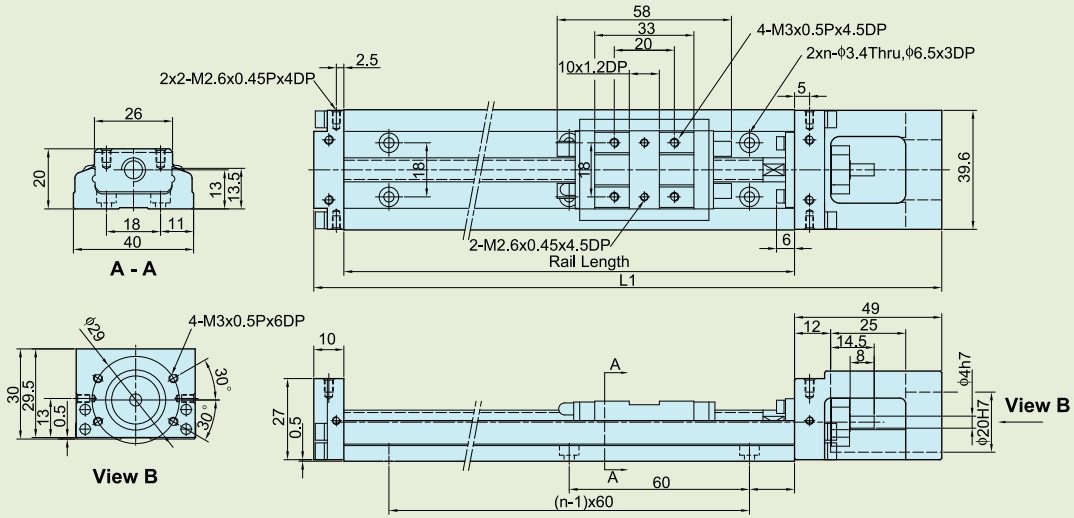


Motor Adaptor Flange F3



Dimension

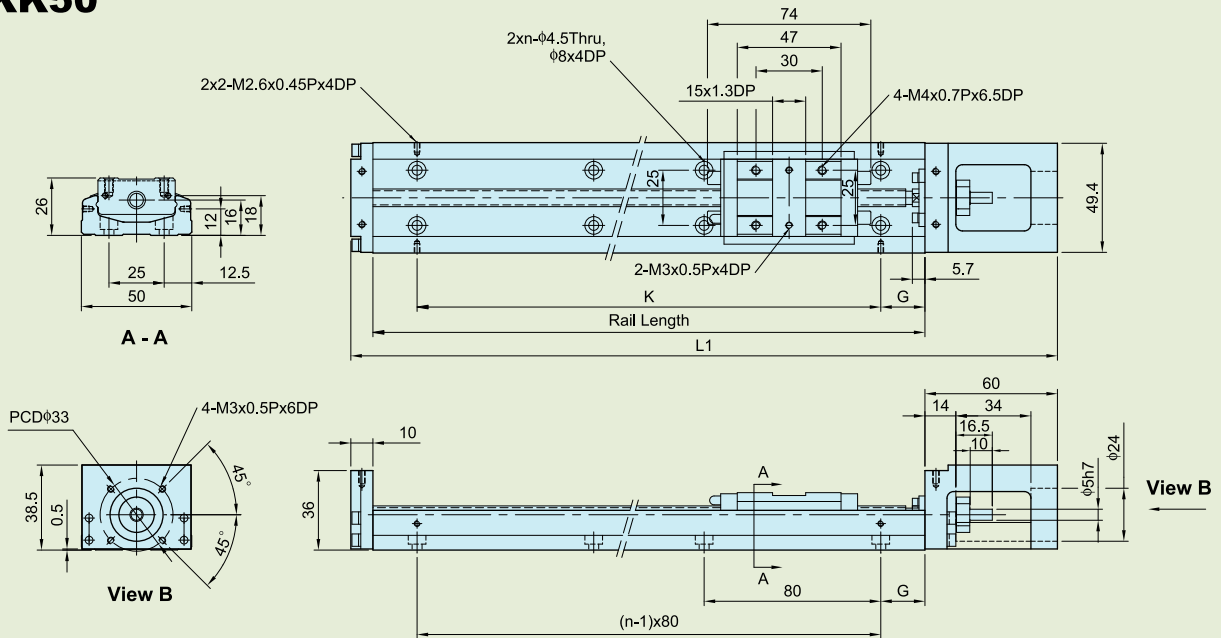
KK40



(Unit : mm)

Rail Length	Total Length L1	Maximum Stroke		G	n
		A1 Block	A2 Block		
100	159	36	-	20	2
150	209	86	34	15	3
200	259	136	84	40	3

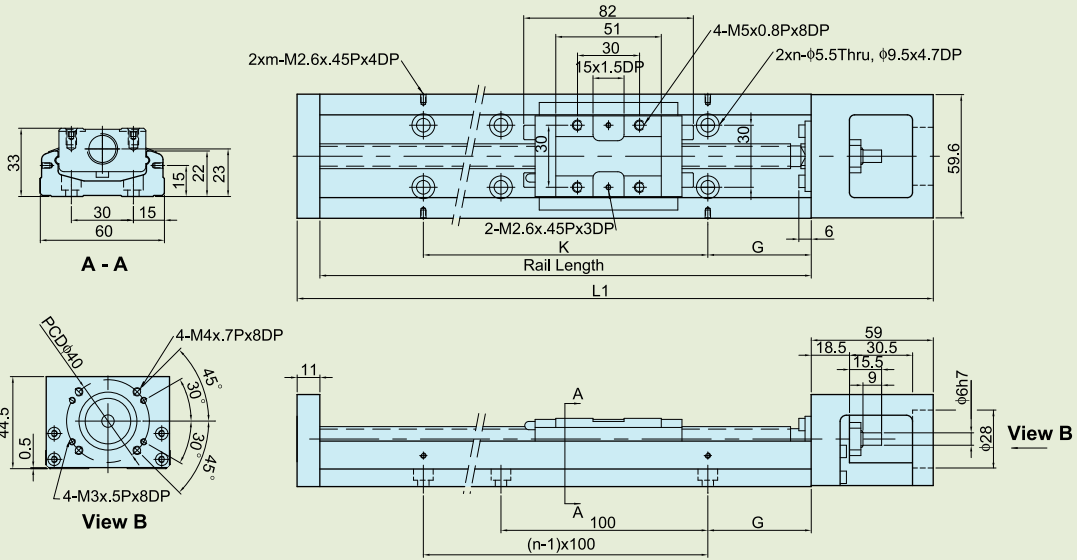
KK50



(Unit : mm)

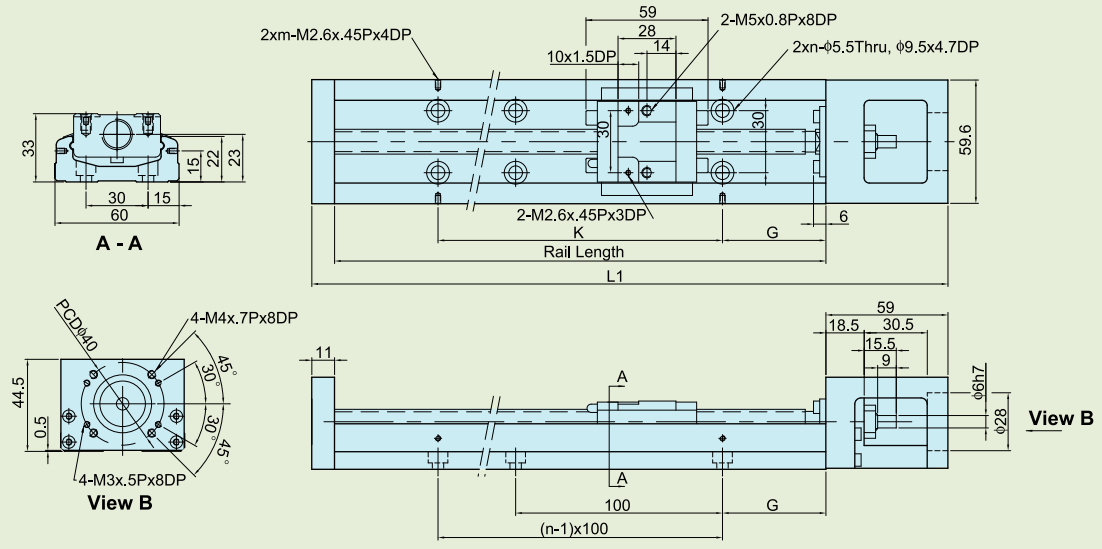
Rail Length	Total Length L1	Maximum Stroke		G	K	n
		A1 Block	A2 Block			
150	220	70	-	35	80	2
200	270	120	55	20	160	3
250	320	170	105	45	160	3
300	370	220	155	30	240	4

KK60



(Unit : mm)

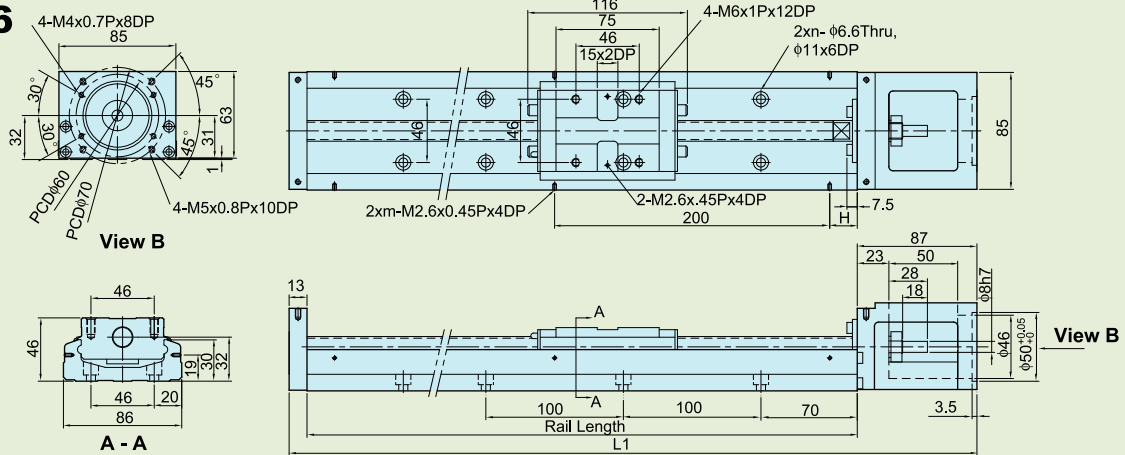
Rail Length	Total Length L1	Maximum Stroke		G	K	n	m
		A1 Block	A2 Block				
150	220	60	-	25	100	2	2
200	270	110	-	50	100	2	2
300	370	210	135	50	200	3	2
400	470	310	235	50	100	4	4
500	570	410	335	50	200	5	3
600	670	510	435	50	100	6	6



(Unit : mm)

Rail Length	Total Length L1	Maximum Stroke		G	K	n	m
		S1 Block	S2 Block				
150	220	85	34	25	100	2	2
200	270	135	184	50	100	2	2
300	370	235	184	50	200	3	2
400	470	335	284	50	100	4	4
500	570	435	384	50	200	5	3
600	670	535	484	50	100	6	6

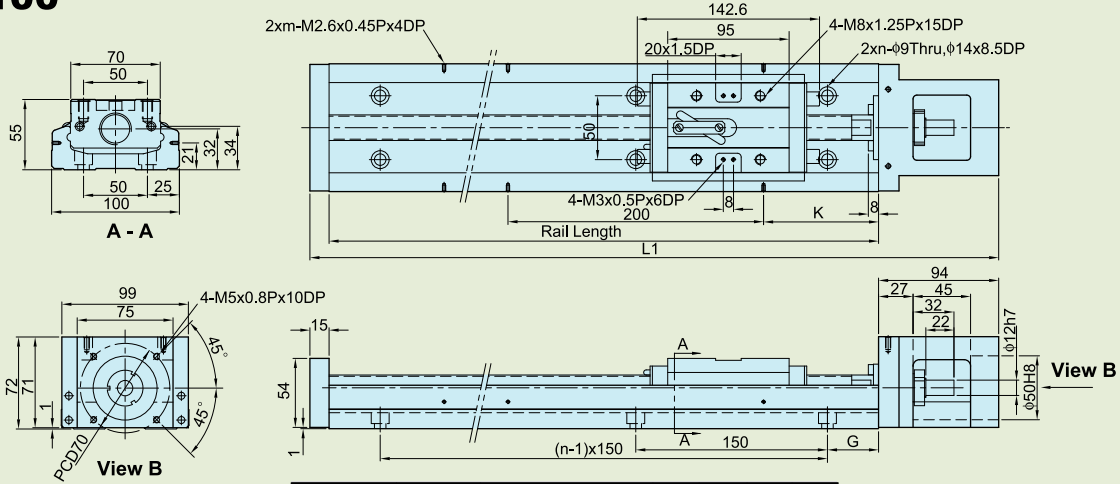
KK86



Rail Length	Total Length L1	Maximum Stroke		H	n	m
		A1 Block	A2 Block			
340	440	210	100	70	3	2
440	540	310	200	20	4	3
540	640	410	300	70	5	3
640	740	510	400	20	6	4
740	840	610	500	70	7	4
940	1040	810	700	70	9	5

(Unit : mm)

KK100



Rail Length	Total Length L1	Maximum Stroke		G	K	n	m
		A1 Block	A2 Block				
980	1089	828	700	40	90	7	5
1080	1189	928	800	15	40	8	6
1180	1289	1028	900	65	90	8	6
1280	1389	1128	1000	40	40	9	7
1380	1489	1228	1100	15	90	10	7

(Unit : mm)

*The specifications in this catalogue are subject to change without notification.



YOUR 21ST CENTURY PARTNER IN TECHNOLOGY INNOVATION



HIWIN TECHNOLOGIES CORP.

No. 46, 37th Road
Taichung Industrial Park
Taichung 407, TAIWAN
Tel: +886-4-23594510
Fax: +886-4-23594420
http://www.hiwin.com.tw
E-mail: business@mail.hiwin.com.tw

HIWIN GmbH

Brücklesbünd 2, D-77654
Offenburg, GERMANY
Tel: +49-781-93278-0
Fax: +49-781-93278-90
http://www.hiwin.de
E-mail: info@hiwin.de

HIWIN CORPORATION

● **KOBE**
3F. Sannomiya-Chuo Bldg.
4-2-20 Goko-Dori. Chuo-Ku
KOBE 651-0087, JAPAN
Tel: +81-78-262-5413
Fax: +81-78-262-5686
http://www.hiwin.co.jp
E-mail: mail@hiwin.co.jp

● **TOKYO**
Tel: +81-3-3598-8413 · 3598-8131
Fax: +81-3-3598-8414

● **KUMAMOTO**
Tel: +81-96-340-2282
Fax: +81-96-340-2286

● **CHUBU-EIGYOSHO**
Tel: +81-0587-91-3451
Fax: +81-0587-91-3449

HIWIN CORPORATION

● **CHICAGO**
520 Business Center Drive
Mount Prospect, IL 60056, U.S.A.
Tel: +1-847-8272270
Fax: +1-847-8272291
http://www.hiwin.com
E-mail: info@hiwin.com

● **SILICON VALLEY**
Tel: +1-408-9430290
Fax: +1-408-9430891
http://www.hiwinmikro.com
E-mail: hiwinsj@hiwin.com

MOTION AND CONTROL GmbH

PO Box 1367
Alte Landstr. 188, CH-8800 Thalwil
SWITZERLAND
Tel: +41-43-3550330
Fax: +41-43-3550331
http://www.hiwin.ch
E-mail: info@hiwin.ch

HIWIN S.R.O.

Lozibky 15
61400 Brno,
CZECH REPUBLIC
Tel/Fax: +420-5-485-28238
http://www.krios.cz
E-mail: hiwin@sky.cz